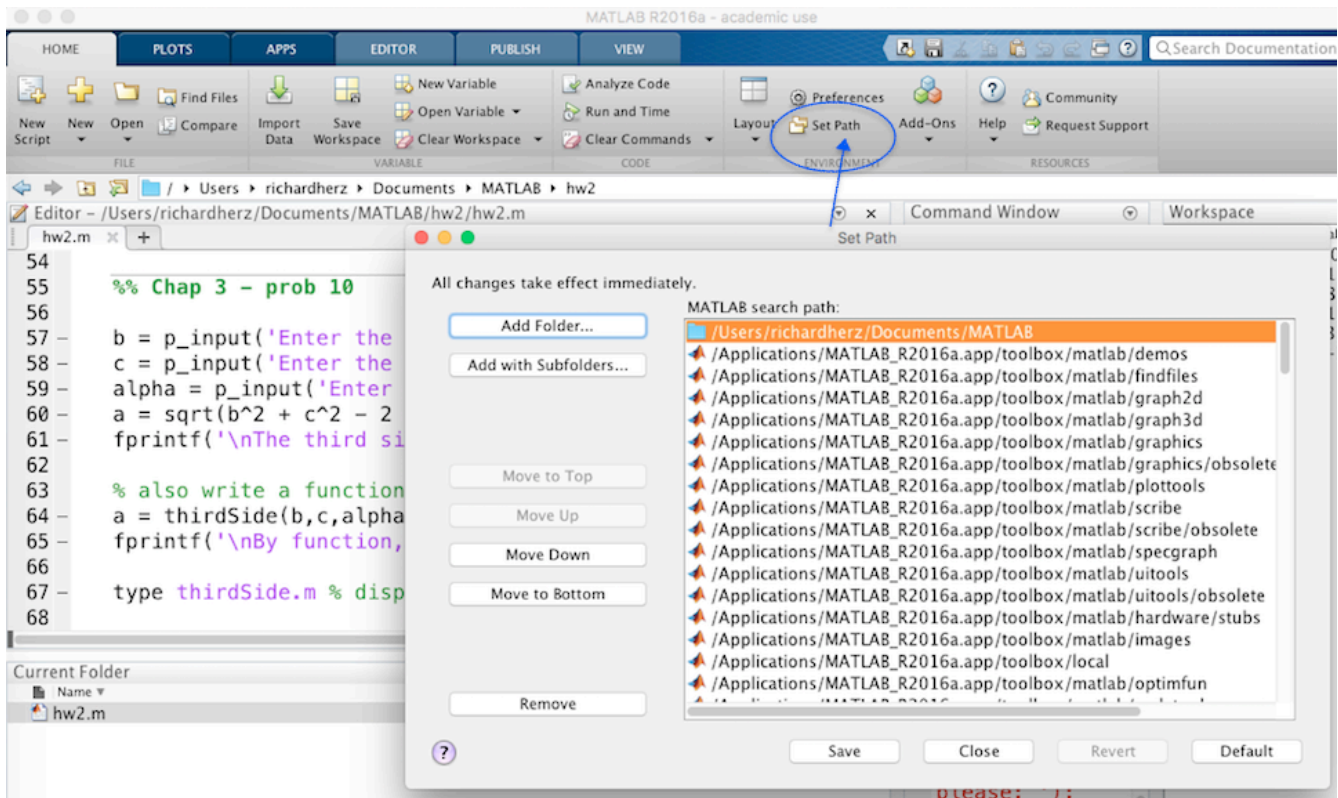


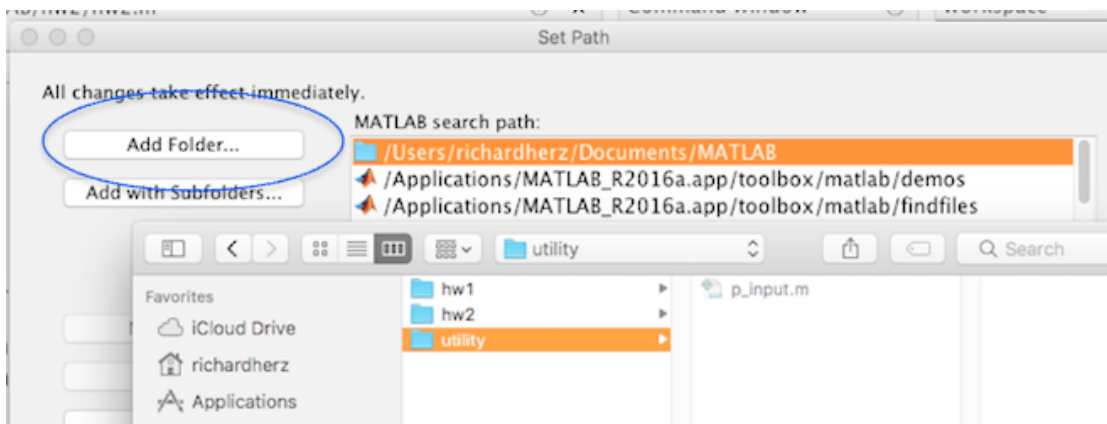
Setting Matlab's Search Path

When a program calls a function, the function must be in the current folder *or* in Matlab's "search path."

For example, to use the function `p_input.m` and have that file located in only one location in your files, you can set the search path to add that location. Click the button "Set Path" in the Home menu tab to open the Set Path window.



Let's say that file `p_input.m` is located in a folder "utility". Click the "Add Folder" button in the Set Path window, and then find and select that folder and add it to the search path.



continued next page...

Finally, click the Save button and close the Set Path window. Now Matlab can find the function p_input whenever you use it.

